

Student Satisfaction Survey 2018-19

Name of the College: Mrs.A.V.N.College

Place: Visakhapatnam

AISHE CODE: C-24230

Instructions to fill the questionnaire:

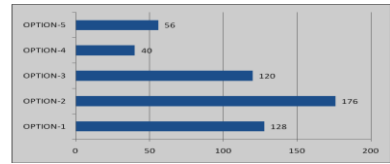
- All questions should be compulsorily attempted.
- Each question has five responses, choose the most appropriate one.

Questionnaire

Question	Student Response												
1. How much of the syllabus was covered by the teacher?													
4 – 85 to 100% 3 – 70 to 84% 2 – 55 to 69% 1– 30 to 54% 0–Below 30%	<table border="1"> <caption>Student Response Data for Question 1</caption> <thead> <tr> <th>Option</th> <th>Count</th> </tr> </thead> <tbody> <tr> <td>OPTION-5</td> <td>0</td> </tr> <tr> <td>OPTION-4</td> <td>40</td> </tr> <tr> <td>OPTION-3</td> <td>144</td> </tr> <tr> <td>OPTION-2</td> <td>216</td> </tr> <tr> <td>OPTION-1</td> <td>120</td> </tr> </tbody> </table>	Option	Count	OPTION-5	0	OPTION-4	40	OPTION-3	144	OPTION-2	216	OPTION-1	120
Option	Count												
OPTION-5	0												
OPTION-4	40												
OPTION-3	144												
OPTION-2	216												
OPTION-1	120												
2. How well did your teacher prepare for the classes?													
4 –Thoroughly 3 – Satisfactorily 2 – Poorly 1 – Indifferently 0 – Won't teach at all	<table border="1"> <caption>Student Response Data for Question 2</caption> <thead> <tr> <th>Option</th> <th>Count</th> </tr> </thead> <tbody> <tr> <td>OPTION-5</td> <td>8</td> </tr> <tr> <td>OPTION-4</td> <td>32</td> </tr> <tr> <td>OPTION-3</td> <td>72</td> </tr> <tr> <td>OPTION-2</td> <td>304</td> </tr> <tr> <td>OPTION-1</td> <td>104</td> </tr> </tbody> </table>	Option	Count	OPTION-5	8	OPTION-4	32	OPTION-3	72	OPTION-2	304	OPTION-1	104
Option	Count												
OPTION-5	8												
OPTION-4	32												
OPTION-3	72												
OPTION-2	304												
OPTION-1	104												
3. How well is the teacher able to communicate?													
4 – Always effective 3 – Sometimes effective 2 – Just satisfactorily 1– Generally ineffective 0– Very poor communication	<table border="1"> <caption>Student Response Data for Question 3</caption> <thead> <tr> <th>Option</th> <th>Count</th> </tr> </thead> <tbody> <tr> <td>OPTION-5</td> <td>32</td> </tr> <tr> <td>OPTION-4</td> <td>16</td> </tr> <tr> <td>OPTION-3</td> <td>120</td> </tr> <tr> <td>OPTION-2</td> <td>168</td> </tr> <tr> <td>OPTION-1</td> <td>184</td> </tr> </tbody> </table>	Option	Count	OPTION-5	32	OPTION-4	16	OPTION-3	120	OPTION-2	168	OPTION-1	184
Option	Count												
OPTION-5	32												
OPTION-4	16												
OPTION-3	120												
OPTION-2	168												
OPTION-1	184												
4. The teacher's approach to teaching can best be described as													
4– Excellent 3 – Very good 2 – Good 1 – Fair 0– Poor	<table border="1"> <caption>Student Response Data for Question 4</caption> <thead> <tr> <th>Option</th> <th>Count</th> </tr> </thead> <tbody> <tr> <td>OPTION-5</td> <td>40</td> </tr> <tr> <td>OPTION-4</td> <td>48</td> </tr> <tr> <td>OPTION-3</td> <td>152</td> </tr> <tr> <td>OPTION-2</td> <td>216</td> </tr> <tr> <td>OPTION-1</td> <td>64</td> </tr> </tbody> </table>	Option	Count	OPTION-5	40	OPTION-4	48	OPTION-3	152	OPTION-2	216	OPTION-1	64
Option	Count												
OPTION-5	40												
OPTION-4	48												
OPTION-3	152												
OPTION-2	216												
OPTION-1	64												
5. Fairness of the internal evaluation process by the teacher													
4 – Always fair 3 – Usually fair 2 – Sometimes unfair 1 – Usually unfair 0– Unfair	<table border="1"> <caption>Student Response Data for Question 5</caption> <thead> <tr> <th>Option</th> <th>Count</th> </tr> </thead> <tbody> <tr> <td>OPTION-5</td> <td>40</td> </tr> <tr> <td>OPTION-4</td> <td>24</td> </tr> <tr> <td>OPTION-3</td> <td>112</td> </tr> <tr> <td>OPTION-2</td> <td>208</td> </tr> <tr> <td>OPTION-1</td> <td>136</td> </tr> </tbody> </table>	Option	Count	OPTION-5	40	OPTION-4	24	OPTION-3	112	OPTION-2	208	OPTION-1	136
Option	Count												
OPTION-5	40												
OPTION-4	24												
OPTION-3	112												
OPTION-2	208												
OPTION-1	136												

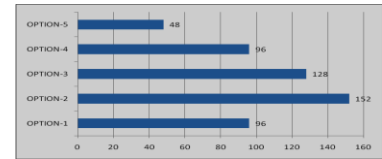
6. Was your performance in assignments discussed with you?

- 4 – Every time
- 3 – Usually
- 2 – Occasionally/Sometimes
- 1 – Rarely
- 0– Never



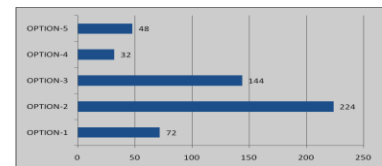
7. The teacher takes active interest in arranging field visits for students.

- 4 – Regularly
- 3 – Often
- 2 – Sometimes
- 1 – Rarely
- 0– Never



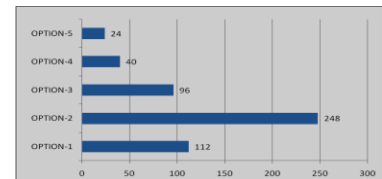
8. The teaching process in the class room facilitates you in cognitive, social and emotional growth.

- 4 – Significantly
- 3 – Very well
- 2 – Moderately
- 1 – Marginally
- 0– Not at all



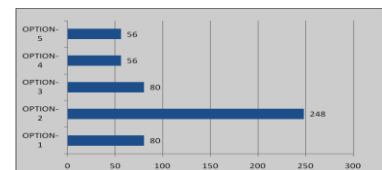
9. The teacher provides multiple opportunities to learn and grow.

- 4 – Strongly agree
- 3 – Agree
- 2 – Neutral
- 1 – Disagree
- 0– Strongly disagree



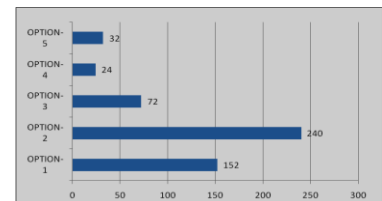
10. The teacher informs you about your expected competencies, course outcomes and programme outcomes.

- 4 – Every time
- 3 – Usually
- 2– Occasionally/Sometimes
- 1 – Rarely
- 0– Never



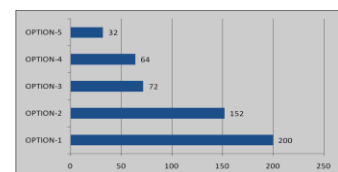
11. Your teacher does a necessary follow-up with an assigned task to you.

- 4 – Every time
- 3 – Usually
- 2 – Occasionally/Sometimes
- 1 – Rarely
- 0 – Never



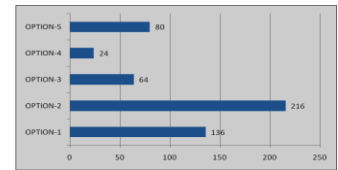
12. The teacher illustrates the concepts through examples and applications.

- 4 – Every time
- 3 – Usually
- 2 – Occasionally/Sometimes
- 1– Rarely
- 0 – Never



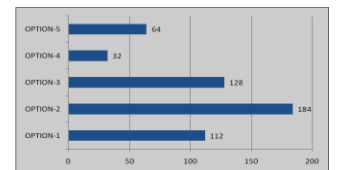
13. The teacher identifies your strengths and encourages you with providing right level of challenges.

- 4 – Fully
- 3 – Reasonably
- 2 – Partially
- 1 – Slightly
- 0– Unable to



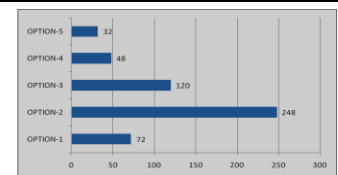
14. Teacher is able to identify your weaknesses and help you to overcome them.

- 4 – Every time
- 3 – Usually
- 2 – Occasionally/Sometimes
- 1 – Rarely
- 0 – Never



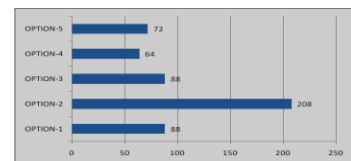
15. The teacher makes effort to engage students in the monitoring, review and continuous quality improvement of the teaching learning process.

- 4 – Strongly agree
- 3 – Agree
- 2 – Neutral
- 1 – Disagree
- 0 – Strongly disagree



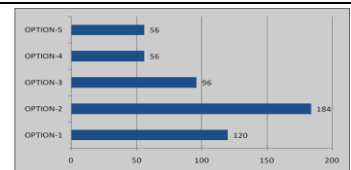
16. The teacher uses the student centric methods, such as experiential learning, participative learning and problem solving for enhancing learning experiences.

- 4 – To a great extent
- 3 – Moderate
- 2 – Some what
- 1 – Very little
- 0 – Not at all



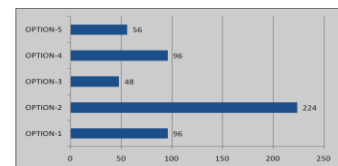
17. The teacher encourages you to participate in extracurricular activities.

- 4 – Strongly agree
- 3 – Agree
- 2 – Neutral
- 1 – Disagree
- 0 – Strongly disagree



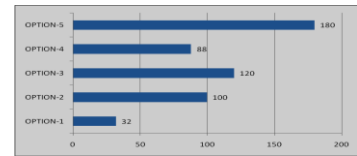
18. Efforts are made by the teacher to inculcate soft skills, life skills and employability skills to make you ready for the world of work.

- 4 – To a great extent
- 3 – Moderate
- 2 – Some what
- 1 – Very little
- 0 – Not at all



19. The teacher uses ICT tools such as LCD projector, Multimedia, etc. while teaching.

- 4 – Above 90%
- 3 – 70 – 89%
- 2 – 50 – 69%
- 1 – 30 – 49%
- 0 – Below 29%



20. The overall quality of teaching-learning process in the class is very good.

- 4 – Strongly agree
- 3 – Agree
- 2 – Neutral
- 1 – Disagree
- 0 – Strongly disagree

